

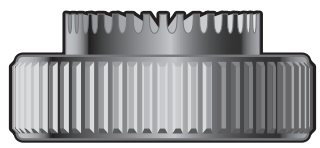
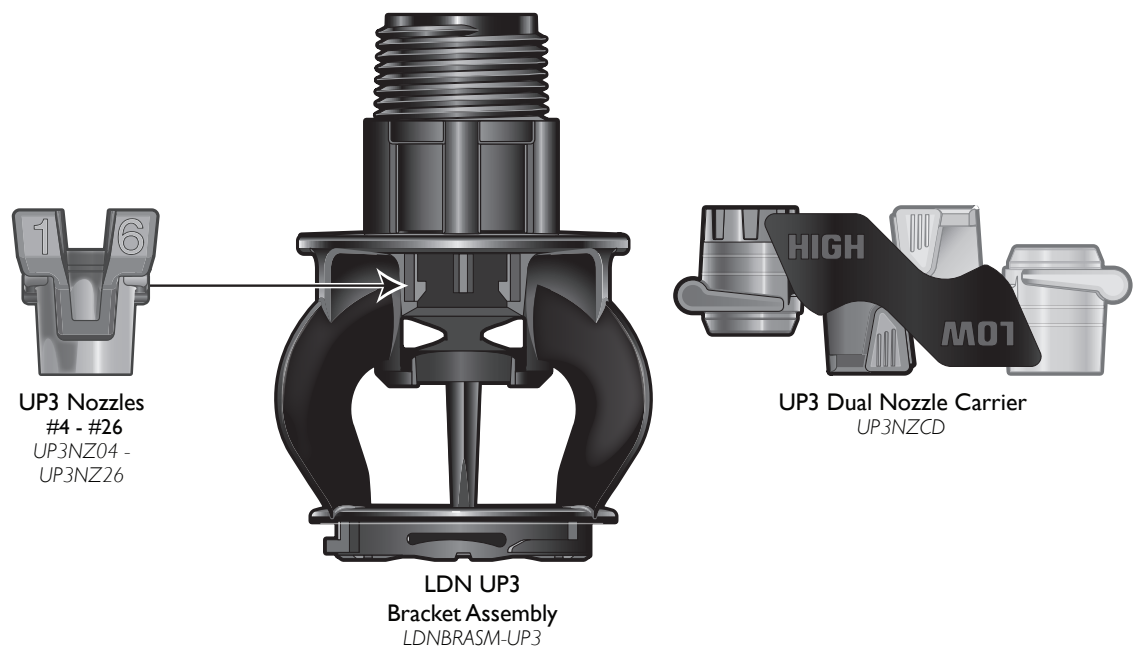
LDN UP3™

Recommended installation

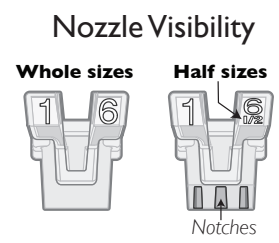
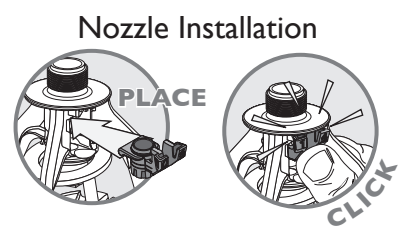
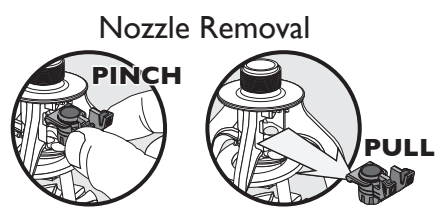
Component Assembly



The One Weight
(0.85 LB) ONEWGT4



Deflector Pads
Please see LDN schematic for part numbers



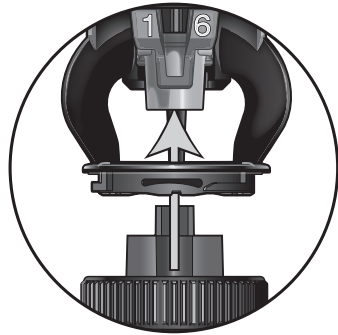
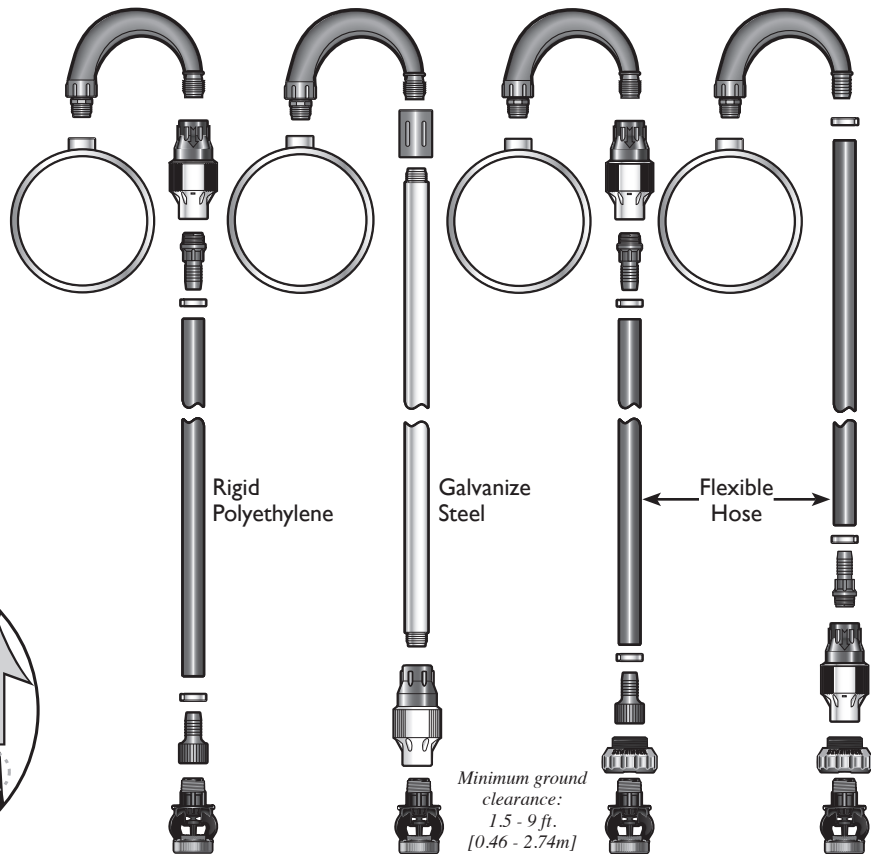
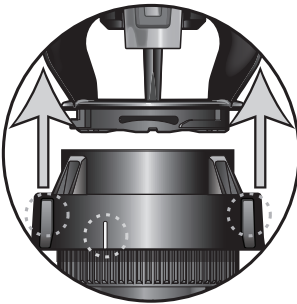
LDN System Assembly

Mounting

1. The LDN can be mounted on rigid drops or flexible hose drops.
2. When using flexible hose a weight is recommended.
3. When using the threaded Senninger "The One" weight, use the internal "fit technology" to nest weight onto the base of the LDN.
4. Conventional slip over weights can be used with the LDN.
5. Mount the LDN no less than 1.5 - 9 ft. [0.46 - 2.74m] above the ground.
6. See Senninger Gooseneck brochure for additional mounting options.

Bubbler Pad Assembly

Make sure the **large tick marks** of the UP3 Bubbler Pad align with the LDN UP3 Bracket legs before twisting to lock it in. The **small tick mark** aligns with the leg when locked.



Part-Circle Pad Assembly

With the **nozzle number** in the bracket facing you, center the **tab** on the Part-Circle Pad behind the nozzle before twisting to lock it in.

Pressure Regulator Location

1. Pressure regulators can be installed at the top of the drop, or near the applicator.
2. Always follow your customized printout for proper pressure regulator placement.

Important: To maintain product warranty and maximize drop component life, refer to the information and diagrams here.

Performance Data

	Mini Pad	Single Pad	Double Pad	Triple Pad	Part-Circle Pad	Bubbler Pad
Nozzle sizes						
Minimum	#4 1/16" [1.59 mm]	#10 5/32" [3.97 mm]	#15 15/64" [5.95 mm]	#20 5/16" [7.94 mm]	#6 3/32" [2.38 mm]	#4 1/16" [1.59 mm]
Maximum*	#9 9/64" [3.57 mm]	#14 7/32" [5.56 mm]	#19 19/64" [7.54 mm]	#26 13/32" [10.32 mm]	#18 9/32" [7.14 mm]	#26 13/32" [10.32 mm]
Flows						
Minimum	0.24 gpm [55 L/hr]	1.74 gpm [395 L/hr]	3.91 gpm [888 L/hr]	6.78 gpm [1540 L/hr]	0.64 gpm [145 L/hr]	0.24 gpm [55 L/hr]
Maximum	2.52 gpm [572 L/hr]	6.09 gpm [1383 L/hr]	11.1 gpm [2517 L/hr]	20.5 gpm [4656 L/hr]	10.04 gpm [2280 L/hr]	20.5 gpm [4656 L/hr]
Maximum Spacing**						
at 6 ft [1.8 m] ground clearance	7 ft [2.13 m]	7 ft [2.13 m]	7 ft [2.13 m]	7 ft [2.13 m]	N/A [N/A]	
Operating Pressure at noz.						
Minimum	6 psi [0.41 bar]	6 psi [0.41 bar]	6 psi [0.41 bar]	6 psi [0.41 bar]	6 psi [0.41 bar]	6 psi [0.41 bar]
Maximum	20 psi [1.38 bar]	20 psi [1.38 bar]	20 psi [1.38 bar]	20 psi [1.38 bar]	20 psi [1.38 bar]	20 psi [1.38 bar]

* It is recommended that larger nozzle sizes be used only on soils and slopes that can handle higher application rates.

** For optimum performance Senninger recommends the use of maximum spacing for 1-2 spans only.

Pads available in concave (blue), convex (green) and flat (black) in smooth, medium groove, and deep groove based on desired trajectory and throw.